

## Agenda/ Meeting Minutes

**Meeting Date:** 28Sep2023

**Topic:** Lake Wisconsin Alliance Annual Meeting

### **Board Meeting Attendees:**

Forrest, Deanna	NP	Murray, Andrea	NP	Zumm, Rob	NP
Gleason, Mike	X	Neander, Steve	X		
Herbert, Brandon	NP	Ray, Kauhanae	X		
Kell, David	X	Stowe, Amy	X		
Kidd, Sarah	X	Zumm, Jenny	X		

### **Agenda/Meeting Discussion:**

This was the annual meeting of all LWA members (see list of attendees below).

#### 1&2. Meeting Administration

- David called the meeting to order. The meeting minutes of 26Aug2023 will be edited to indicate that current board members were approved for another term.

#### 3. Treasurer's Financial Report

- No update was provided at this meeting.

#### 4. Communication

- We will be looking for alternatives for management of our website due to a lack of response by our current resource (Clayton Hedgepath). Kauhane Ray will work with Mike to develop the website.

#### 5. Membership

- Andrea provided an update on membership prior to the meeting.
  - Current Members: 465
  - Business Members: 29

#### 6. Education

- Jenny is following up on educational opportunities. No updates at this time.

#### 7. New Business

- Election of Officers for 2023-2024:
  - LWA officers whose term concluded and who serve in the position listed below were approved for another term.
    - President: David Kell
    - Vice President: Mike Gleason
    - Treasurer: Brandon Herbert
    - Secretary: Sarah Kidd

## Agenda/ Meeting Minutes

- Review of the Okee Bay Master Plan & Funding Request
  - Carol McMahon and Nancy Tatsuguchi joined the meeting to provide an overview of the Okee Bay Mill Pond Lake Association. They reviewed the costs of conducting an analysis of Okee Bay and requested financial support from LWA.
  - The request is for \$5000. Carol stated that LWA could divide this amount and give \$2500 now and \$2500 further into the process. This will be evaluated by the board and will be discussed at the October meeting.
- Native Plants Initiative
  - Sarah Kidd gave an update on the Native Plants initiative. (Refer to attached slides.)
  - Amy Stowe volunteered to work with Sarah on this initiative. *Post meeting note:* Kauhane Ray volunteered to also work on this initiative.
  - Next Steps: A plan will be drafted to provide details on the scope, approach, and timelines for this initiative.
- Merchandise Purchase Ideas
  - Jenny is asking for ideas on types of merchandise purchased for future events.
- Feedback from the Annual Meeting
  - The giveaways were very popular!
  - Good reviews of the speaker from the International Crane Foundation. All agree LWA should continue to have informational speakers at this meeting.

### 8. Prior Business

- Sauk County Film Festival
  - The Sauk County Film Festival will be held on November 4th. The LWA is a supporting member.
- Ripple Effects, *How We're Loving Our Lakes to Death*. By Ted J. Rulseh
  - i. David Kell presented an overview of Chapter 15. Refer to the attached slide.

**Next Meeting:** October 26, 2023

### Action Items

No	Item	Responsible	Status
1	Improve functionality of the LWA website	Mike Kauhanae	

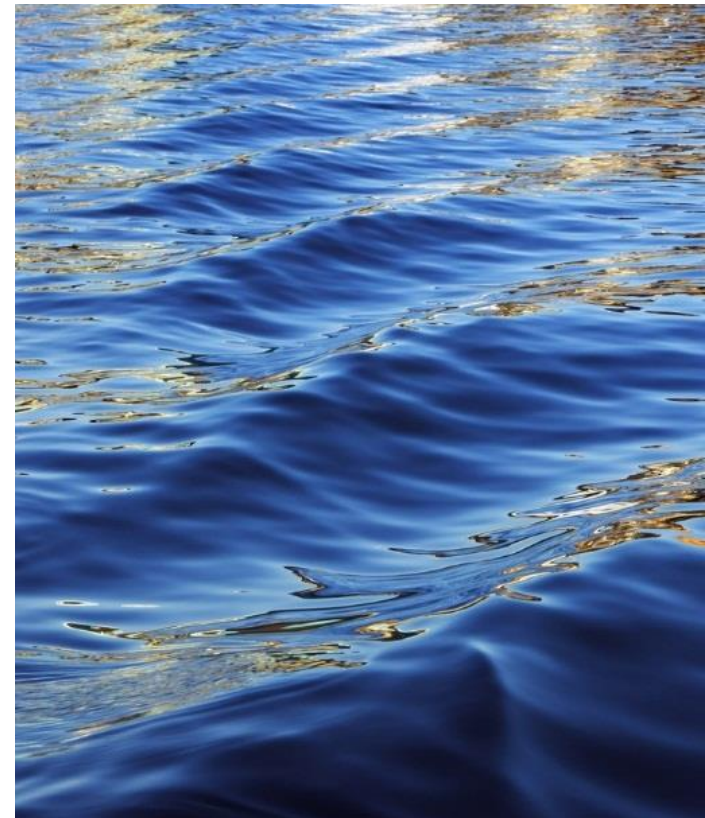
## Agenda/ Meeting Minutes

No	Item	Responsible	Status
2	Decision on support request from the Okee Bay Mill Pond Lake Association	LWA Board	
3	Draft a plan to provide details on the scope, approach, and timelines for the Native Plants Initiative	Sarah Amy Kauhanae	
4	Explore future dates for educational presentation on invasive species	Dede	Continue to follow
5	Contact Arthur Watkinson to understand his work to date on invasive species		Continue to follow
6	Explore LWA hosting a Meet & Greet for the Lake Wisconsin watershed	David	Continue to follow
7	Contact Arthur Watkinson to discuss stump removal issue	Mike	Continue to follow
8	Investigate requirements for placement & cost of fish sticks.	Mike	Continue to follow
9	Follow up on area landscaping companies to carry and promote alternative planting options (e.g., native Wisconsin grasses) – <a href="#">This will become part of the Native Plants Initiative</a>	Sarah	CLOSED



# Wisconsin Native Plants: Initiative for a Healthy Lake

Lake Wisconsin Alliance



# Proposed Objective

- Gain LWA Board Member input and ideas on and approval for the approach to develop and implement an initiative to expand the knowledge of and access to native plants for LW residents.

# Focus Areas

## Education

- Plants that are native to Wisconsin
- Benefits of native plants
- Native plants by growing conditions

## Access

- Provide LWA members a list nurseries and landscapers where they can get native plants

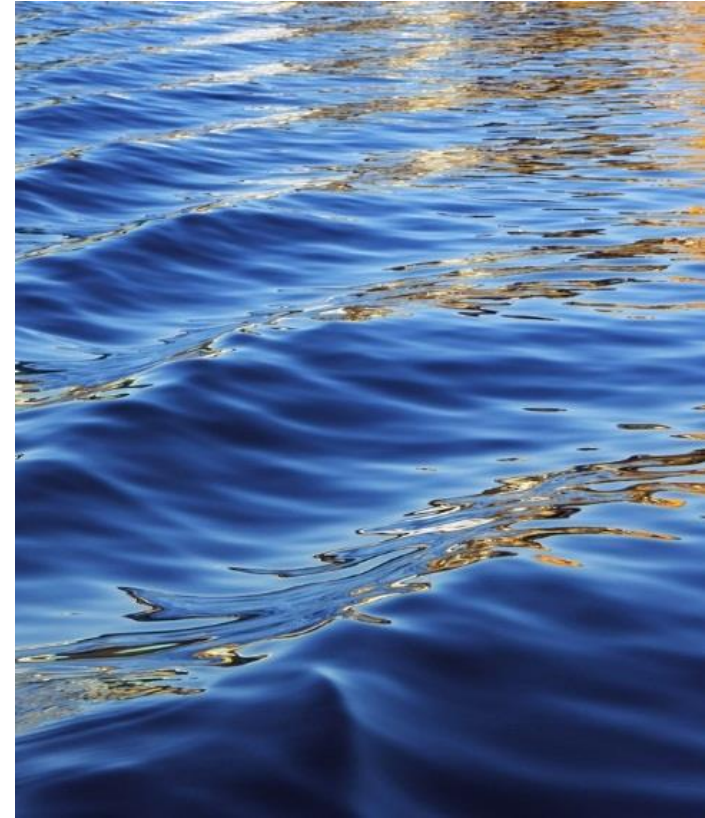
## Communication

- Determine best path to communicate information
  - ❖ LWA website
  - ❖ FB page
  - ❖ Email
  - ❖ Information distributed at local events



# Challenges:

Evaluating Current Resources



# Evaluating Current Resources

- Some published materials describing native plants and lists of native plant nurseries
  - However, the links on some of the published materials are “dead links”





# Healthy Lakes 350 ft2 Native Planting Companion Guide

**Improve wildlife habitat, natural beauty and privacy, and decrease runoff.**

## Resources

### OVERVIEW VIDEOS FROM UNIVERSITY OF MINNESOTA EXTENSION

- **Shoreland restoration: A growing solution**  
This video outlines why natural shorelines help protect water quality and wildlife habitat, and introduces how shoreland property owners can restore natural functions to their shorelines. (Running time: 15:30). <https://www.youtube.com/watch?v=n5o9xjFLnvs> ✓
- **Keeping our shores: Shoreland best management practices**  
Introduces best management practices that shoreland owners can use to protect the water quality in a lake or river, including shoreline filter strips, proper septic maintenance, and appropriate lawn care practices. (Running time: 15:20). <https://www.youtube.com/watch?v=mfrSvWSKcIE> ✓

### WISCONSIN NATIVE PLANT NURSERIES

- <http://dnr.wi.gov/files/PDF/pubs/ER/ER0698.pdf> ✗
- <http://grandprairiefriends.org/nurseriesWI.php> ✗
- <http://findnativeplants.com/midwest/wisconsin-native-plants/> ✗

### WISCONSIN RESTORATION CONSULTANTS

(native plant consultants, landscapers, and nursery professionals)

- <http://dnr.wi.gov/files/PDF/pubs/ER/ER0699.pdf> ✗

### PLANT FINDER ONLINE TOOLS

- Langlade County: <http://lrrd.co.langlade.wi.us/shoreland/index.asp> ✗
- Prairie Nursery "plant finder" tool: <http://www.prairienursery.com/store/advanced-search#.VDCFE7BOncs> ✓
- Minnesota Blue Thumb Program "Plant Selector": <http://www.bluethumb.org/plants> ✓

DNR PUB WY-002



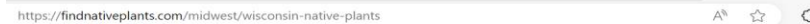
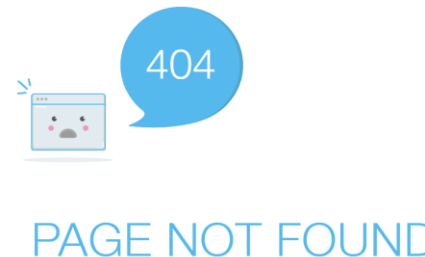
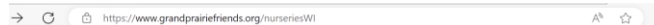
## Page Not Found

The Web page that you are looking for is no longer on the server. Please check the page location. If you had this page bookmarked, please remove the bookmark from your browser.

### Help Us Improve Our Site

So that we can serve you better in the future, please [fill out our feedback form](#) and tell us about the problem you encountered.

Last revised: Tuesday, August 25 2020



### Dangerous page blocked for your protection

<https://findnativeplants.com/midwest/wisconsin-native-plants>  
Dangerous pages attempt to install software that can harm the device, gather personal information or operate without your consent.

TAKE ME BACK TO SAFETY

[I understand the risks, take me there anyway.](#)

# Evaluating Current Resources

← ↻ 🔒 <https://dnr.wisconsin.gov/topic/endangeredresources/nativeplants>

Facebook Twitter YouTube Instagram LinkedIn RSS Pinterest

**WISCONSIN DEPARTMENT OF NATURAL RESOURCES** HUNTING FISHING PARKS CLIMATE ENVIRONMENT FORE

» TOPIC » ENDANGERED RESOURCES

## PLANT NATIVE PLANTS TO HELP NATURE

Native plants support the entire food web by providing food for insects, birds, bats, small mammals and other wildlife. This is particularly important now that scientists are documenting global declines in insect populations. Used in a rain garden, native plants help minimize flooding and filter out pollutants. The variety of colors, shapes and sizes adds beauty to any property. Get started with the resources below.

### PLANTING BASICS

- [Native plants for beginners \[PDF\]](#)
- [Plant for monarchs \[PDF\]](#)

American goldfinch on native sunflower.

- Limited promotion of materials on the DNR Wisconsin website (you have to be an active “seeker”)

## BUY NATIVE PLANTS

- [Wisconsin Native Plant Nurseries \[PDF\]](#) 
- [Xerces' Milkweed Seed Finder \[exit DNR\]](#)

Business Name	Business Services	DNR Region	Option for lake homeowners	City	Miles from Lodi, WI	
Agrecol	Native plant nursery. Greenhouse open May - September. Offer shipping of native plants.	South Central	Yes	Evansville	52	<a href="http://www.agrecol.com">www.agrecol.com</a>
Bluestem Farm	Restoration consulting & custom plant propagation	South Central	No	Baraboo	32	<a href="http://www.bluestemfarm.com">www.bluestemfarm.com</a>
Environmental Consulting Group(EC3) Inc.	Environmental planning, natural resources consulting, ecological restoration, and wildlife management services.	South Central	No	Madison	26	<a href="http://ec3grp.com">EC3 - Environmental Consulting Group Inc. (ec3grp.com)</a>
Lone Rock Prairie Nursery		South Central		Brodhead	64	No website
Riley Native Plant Nursery	Mail order landscaping & garden plants	South Central	Yes	Verona	26	<a href="http://rileynativeplants.com">Riley Native Plant Nursery - Wisconsin Native Plant Nursery   Riley Native Plant Nursery (rileynativeplants.com)</a>
Tend Native Plants	Mail order. Specialize in pollinator-safe native plants.	South Central	Yes	Madison	26	<a href="http://tendnativeplants.com">About — Tend Native Plants</a>
Two Ferns Nursery LLC	Offer native trees and shrubs for sale in partnership with larger growers	South Central	No	Madison	26	<a href="http://twofernsmadison.com">Two Ferns Native Nursery – Native Perennials grown in Madison, WI (twofernsmadison.com)</a>
White Pelican Farms	Mail order. Native woodland and prairie plants. Uncertain how business operates. All plants show "out of stock" on their website.	South Central	No	Wycocena	23	<a href="http://whitepelicanfarms.com">Native Plants   White Pelican Farm</a>
Hickory Road Gardens	Wholesale grower of native woodland wildflowers	Central	No	Mosinee	112	No website
J & J Transplant Aquatic Nursery LLC	Specializes in propagating, harvesting, and supplying of submergent and emergent vegetation for various environmental and land reclamation concerns.	Central	No	Wild Rose	79	<a href="http://jitransplant.com">J &amp; J Transplant Aquatic Nursery, LLC - Wisconsin's largest aquatic nursery for seed, propagated, potted, and bare root plant material - Wild Rose, WI (jitransplant.com)</a>
Marshland Transplant Aquatic Nursery	Native shoreline, prairie and woodland restoration company and the largest wholesale native freshwater aquatic-nursery in the Midwest	Central	No	Berlin	75	<a href="http://www.marshlandtransplant.com/">http://www.marshlandtransplant.com/</a>
Prairie Nursery		Central	Yes	Westfield	44	<a href="http://prairienursery.com">Native Plants   Prairie Nursery</a>

- Reviewed the list of plant nurseries for South Central & Central Wisconsin
- 7 out of 12 companies are the list are not an option for homeowners (e.g., consultants or wholesalers)
- 3 out of 12 companies that are options for homeowners are mail order only
- 1 out of 12 companies is an option for homeowners and is approx. 1 hour's drive from Lodi
- 1 company did not have a website and could not be reviewed

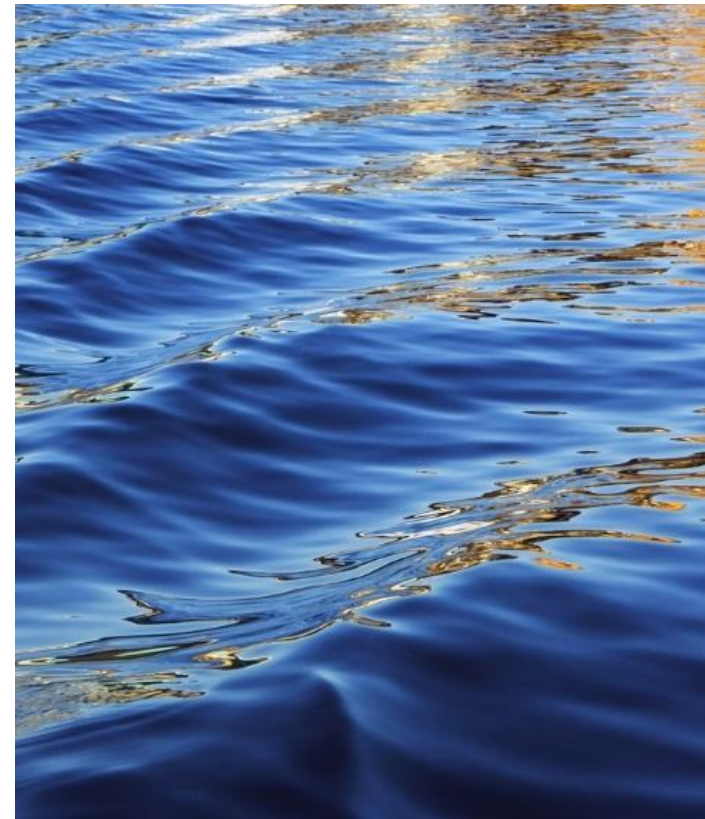
# Landscapers

- Steve Tjugum – Landscape Innovations
  - Spoke to him about the initiative
  - Interested in working with LWA
- Define how we would work with the landscapers
  - Work with them to source plants?
  - List them as a resource on our website?
- ***Additional suggestions for landscapers or nurseries?***



# Next Steps?

Moving Forward



# Next Steps?

## Education

- Identify resources available
- Evaluate content
- Select materials to bring forward to LWA members
- ***LWA develops its own materials from its research***

## Access

- Identify local nurseries and landscapers to source native plants and work with the LWA on the initiative
- Promote the local nurseries and landscapers who sell native plants

## Communication

- Develop communication plan to outline the mode, frequency, and content for most effective communication

# Next Steps?

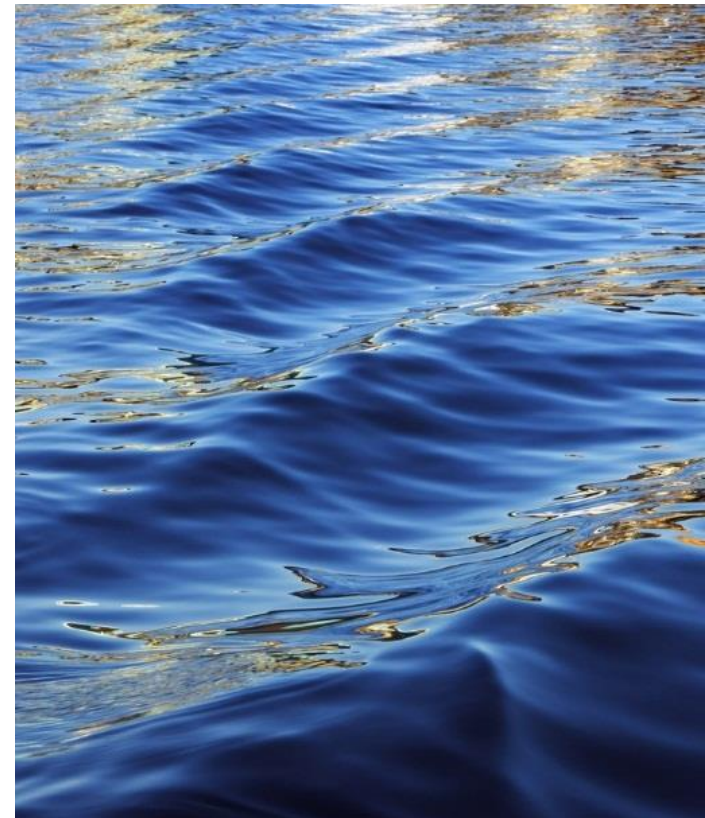
- Map out a plan to better define scope, methods, and timelines
- Target completion in March 2024
- Additional volunteers to work on the project?





# Ways Forward- Forging Connections

Ripple Effects Chapter 15





# EPA National Lake Assessment

- The National Lake assessment is done by the EPA every 5 years
- 2017 Upper Midwest 40% had excessive phosphorous and 35% had excessive nitrogen. The number one reason was nutrient pollution. 25% of the lakes were in “in the most disturbed condition for vegetation along the lake shore.”




# Wis DNR 2017 Assessment



- Their findings were that the lakes they assessed were mostly in good health.
- 56% assessed to high in nutrients.
- In the problem lakes Poor Lake Shore Habitats were the greatest issues.

# Annual water walks : Native American Josephine Mandamin started the Water Walk in 2003 to raise awareness of the importance of water in Wisconsin





## Developing Lake Fronts more responsibly – 3 basic principles

- Protect Assets – both the quality of the lake and the value of the property
- Add to native vegetation to protect the shoreline
- Connectivity – concentrating activities to minimize lake front disruption

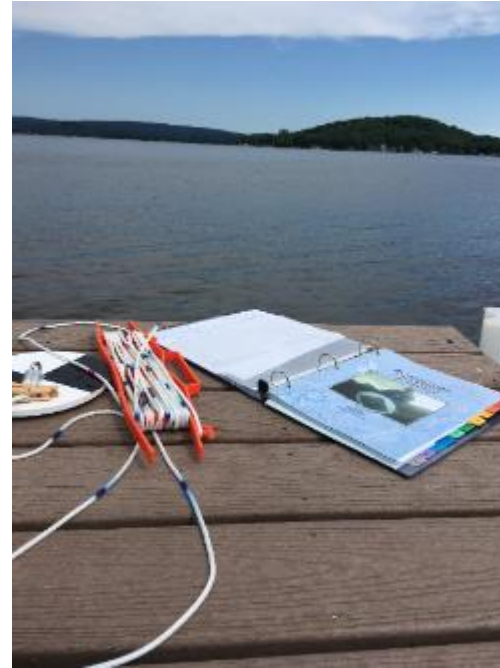


# Water quality and property values

People choosing lake property care about the water quality and recreational usage.



LWA has people that are testing the water quality all summer long.



Lake Associations want to help people make the connection between water quality, property values, community economy and their part in maintaining the lake quality as they recreate and use the lake.

Rate Your Shoreland  
<https://survey.healthy-lakeswi.com>

Giving people tools to rate their own property and lake associations giving them awards for doing so.



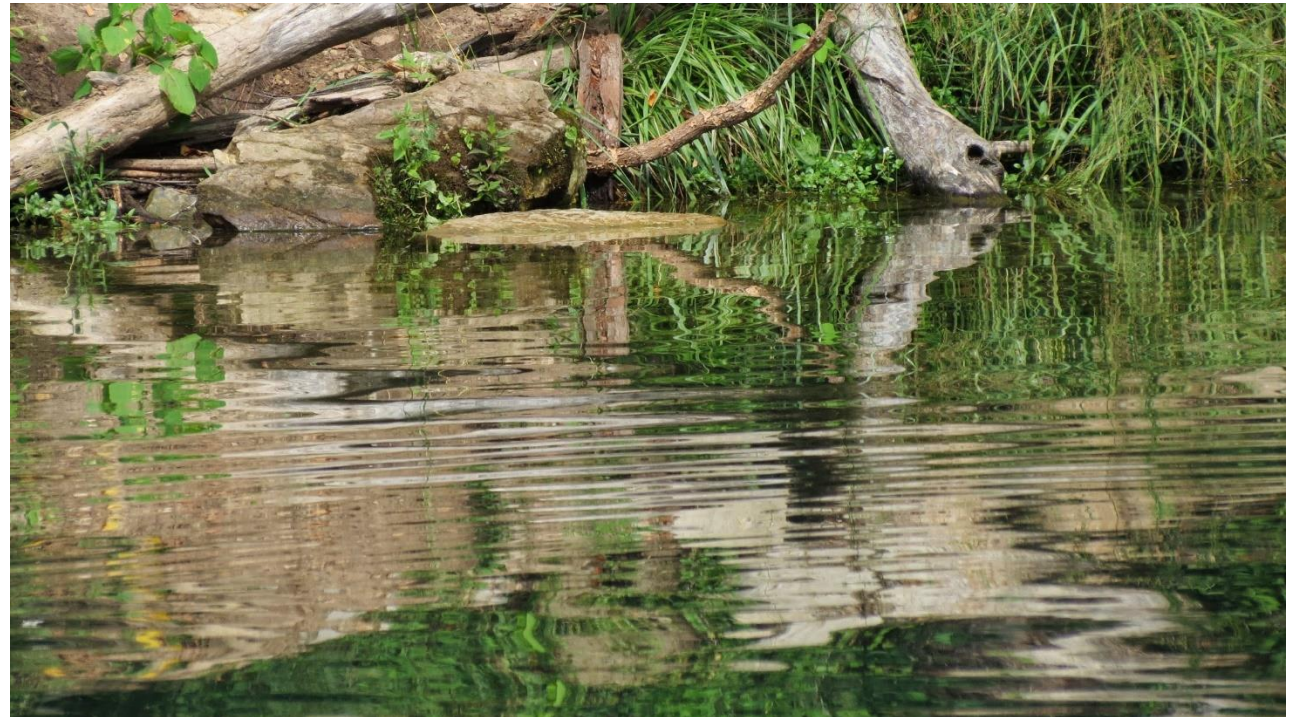
## Importance of Lake Associations

Work with members to do survey of lake to identify areas to be preserved or enhanced.

Most agreed to go simple with home owners.

Suggest simple steps to make a difference

1. Capture water runoff before it reaches the lake
2. Establish a no-mow area or create a buffer of native plants
3. Minimize use of fertilizers, pesticides, and herbicides
4. Maintain the septic system
5. Allow native aquatic plants and fallen trees to remain in the lake.





## A toolbox developing for use in Northern Wisconsin Lakes might help us.

Wisconsin Program :A Toolbox for lake  
protection.

Wisconsin Green Fire working with NOVA  
to develop the tool box.



# Other Partnerships: Uniting around Water ideas for Groups

- Midwest Glacial Lakes Partnership
- Source of grants to enhance fish habitat-Joe Nohner coordinator
- Uniting Around water ideas for groups
- Connect with water related groups in your area that have an interest in quality water and lakes.
- User groups, like boaters, marinas, fishing clubs, farmers, youth groups like FFA and 4h, real estate people, Chamber of Commerce, ect.



# Toward a Land and Water Ethic

- Of course, we don't own the lake but we treasure it and try to care for and protect it as if we did.
- In living on and with our lakes, we need to think beyond ourselves, about the lake as a breathing, living entity. About our neighbors. About the people who visit for all manor of enjoyment. Not the least being fish and wild life, scenic beauty, quiet serenity. About our children and grandchildren , who we hope will enjoy the lake long after we are gone.
- "As lake residents and lake users, we have a collective duty to see that our actions in the aggregate are for good. "
- "Step lightly. Live gently. Take with discretion. Give back in abundance. "
- "Never doubt that a small group of thoughtful, committed citizens can change the world. Indeed it is the only thing that ever has." Margaret Mead
- "If that is true, then surely a group of thoughtful, committed lake advocates tens of thousands strong can work wonders." quotes from the book

